

EUREKA EXPRESS

VOL XXXII No. 6 CIRC 286

JULY 2011



Milking Time Again

GUEST EDITORIAL

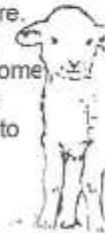


Back in 1998 Brent and I bought a bare 1 acre piece of land from Geoff and Diane Hinton; we built our home and moved in at Labour Weekend of that year. We spent many hours doing the gardens and planted what seemed like an endless amount of trees. In those days we were one of the first 4 blocks to be split off from farmland. A short time later the subdivision which was to become Manor Park came on the market and since that time many other sections on Eureka Road have followed. Eureka has grown considerably in our time here.

I grew up on a farm in Marton and Brent grew up at Rukuhia. Brent lived in Hamilton for a time, then Auckland for 9 years before returning to Hamilton and I lived in Palmerston North for several years before heading to England for 2 years, Auckland and then Hamilton. It has always felt right to be living back in the country after many years of living in town with neighbour's only metres away over the fence. In 2000 our son Harrison was born followed in 2002 by twin girls, Sophie and Nicole. The children love living in the country, being able to make bike tracks around the section, playing soccer on a decent sized area and making a lot more noise than they would be allowed to in town. They attend Newstead School.

Although we are at least 50 years off being classed as "locals" we do feel part of the Eureka community. Many a time Barry has come down to put fence posts in, take fence posts out (there is a pattern here – we have redone a few things in the past 13 years), take rubbish to his dump or feed the animals when we have been away. When any of our calf club lambs have been sick there has been a late night phone call to Phillip for a quick shot of Penicillin. The friendly atmosphere, always willing to help attitude from the locals and mainly farming community, is a very positive aspect of Eureka. The willingness for the local farmers to make the city people feel very welcome and to offer their knowledge on farming matters is always appreciated. A community such as Eureka is a great place to live, to bring up children and is somewhere that would be very hard to leave.

Jane and Brent Whiting



RAINFALL

	June 2011	Year to 30 th June
Total (mm)	149	735
Average (1994-2011)	120	555
Difference	+29	+180

Rainfall recorded on 19 days



SNIPPETS



WELCOME TO EUREKA: to Andrew Steffert and Levarna Wolland who are recent arrivals at 115 Hunter Road. Andrew and Levarna have a two year old son Leo. A warm welcome to you all. Phone 8241 852

Welcome also to another family now living near the crossroads, Leanne Hilder and her two children, Jordan 12, and Samantha 8. A warm welcome to you also. Phone: 8241023

WANTED: Your input, ideas, news, views and any contributions for the Express would be greatly appreciated. We would especially like to hear of or from our local children or teens – their interests, doings, articles or achievements. Phone Gail 8241758, or email editor @eureka.espress.co.nz

GARAGE SALE: After due consideration it has been decided to hold the next Eureka Community Garage Sale in March 2012. The actual date to be advised closer to the time. So lots of time to start thinking and preparing...

MARKET PLACE: 4 Muscovy Ducks to give away to a good home. They are great Lawnmowers and no trouble. Phone 8295531

TELEPHONE LIST: An updated local phone list is enclosed with your Eureka Express this month, compliments of the Eureka Express committee. Special thanks to Linda Hooper for her assistance in collating the list. Please report any mistakes or omissions to Gail phone 8241758



AGM

AGM

AGM

**The Annual General Meeting of the
Eureka Hall Committee
will be held at 7pm, Tuesday 30 August 2011
at 8pm at the Eureka Hall
All welcome.**



Secretary

Tauwhare School

(01) 846 1887 New Zealand
011 846 1887 tauwhare.school.nz
1 87 834 0964



MARAE VISIT

Children, parents, pre-schoolers and staff arrived for the powhiri and over night's stay with anticipation and enthusiasm that even the colds and flus and drizzling rain could not diminish. And what an amazing experience this was! The children responded to the formality of the powhiri, avidly soaked up the stories and the history of the marae and surrounding area and thoroughly enjoyed the activities that followed. The rakau, poi, string games and sketching proved very popular, but it was the haka that stole the show.

Sincere thanks to the whole team at the Tauwhare Marae for their tireless work, delicious hangi, and warm hospitality. A special thank you to Tuku and Candice Wheki for making this an experience we long to repeat.

RED NOSE CHALLENGE

Selwyn Cook, our next door neighbour and owner of the 'school cat' Ping, lay down a challenge to the children. If we could wow him at an assembly with our rendition of The Red Nose Song he, on behalf of Shell Service Stations (now Z), would purchase enough red noses for us all plus donate \$250 in the school's name.

We were all very keen to help children less fortunate and happily took up the challenge. We wowed them!!! So much so, Mr Cook donated a further \$250 to our own school to further the music for the children. Thank you Mr Cook and Shell Service Stations.

NEW APPOINTMENTS

It gives me pleasure to announce that Mr Philip Quenby has been appointed as a permanent teacher and will be continuing in the Year 4/5 class. I am also pleased to announce the permanent return of Kylee McCambridge. Kylee will be teaching in the year 1/2 class.



REPRESENTATIVE RUGBY TEAMS

Tauwhare School has 5 boys who have been selected for the Cambridge Representative Rugby Teams for 2011:

Year 5 William Sinclair
Joseph Sinclair
Dylan Meek
Liam McKenzie
Troy Riddle



This is no mean feat as the Cambridge area encompasses 13 primary schools. The boys now have to practice most Sundays until the 28th August 2011 when, on this day both rep teams attend a tournament held at Te Awamutu. At this tournament each rep team has to play 3 games, playing full field rugby with 15 players on the field.

Congratulations to these boys and thank you to the coaches who have prepared the boys so well.

PMP

Kirsty Gilroy (Room 4 Yr 1) has been researching the PMP (Perceptual Motor Programme) which works to develop children's physical motor skills that provide the foundations necessary for success in their early school years. Activities to enhance balance, cross-body work, memory, finer motor skills are done on a rotation basis. The children love the games! It does require equipment and intensive observations but the research shows positive gains in young children's reading and writing skills.

Pukeko Preschool's Winter Fair

Pukeko Preschool's Winter Fair was a great success, and raised over \$3000 for our preschool. We would like to say a huge thank you to the families and businesses from Tauwhare, Cambridge, Morrinsville and Hamilton who donated items for the fair – we were overwhelmed by your generosity and thank you all very much.



The Education Review Office completed their review of Pukeko Preschool in June and we received a very favourable report which reinforces the direction our wonderful teachers and community of families are taking.

The Trust Board held their AGM in July where we welcomed Sarah Bell, Vaughan Bell and Craig Sharman onto the board. We farewell Janine Broekhuizen and Libby MacEwan – thank you both for everything



you have done for the preschool during your time on the Trust Board.

Our current focus is on 'Sharing our World with Animals', and we are looking forward to our annual trip to the Savages' Goat farm during the first week of August.

Pukeko Preschool continues to thrive with a full role but we are always open to new families on our waiting list. We welcome visits anytime during a session (8:45am - 1:15pm), or phone 824 0860.

EUREKA EXPRESS

ADVERTISING RATES		CONTACTS – Gail or Gayle	
Classified Advertisements	Free	Gail Mayall (Editor)	Gayle Orr (Treasurer)
Small Business Advertisements	\$10 / month	70 Eureka Road	1139 SH26
• x 10 insertions	\$80 / year	Ph 8241 758	R D 6, HAMILTON 3296
One Third Page Advertisement	\$15 / month	Fax 8241 028	Ph 8241 713
• x 10 insertions	\$120 / year	e-mail:	Fax –
One Half Page Advertisement	\$20 / month	editor@eurekaexpress.co.nz	e-mail: eorr@xtre.co.nz
• x 10 insertions	\$160 / year	gailandberry@silingshot.co.nz	



Pukeko Preschool, Tauwhare

"Quality early childhood education for 2-5 year olds in a caring rural environment"

The Pukeko Preschool held its annual Winter Fair on July 8th 2011. It was an incredible success and enjoyed by all. However, it could not have happened without all the incredible support we received and donations/sponsorship given. We would like to thank EVERYONE who helped us out, including the following:

Matt Long	DJ & RJ Transport	Wallace Corporation Waitoa
Animal Health Centre Morrinsville	Silver Fern Farms Waitoa	Visique Hamilton East
Mark Building	Mamuka Health	Frucor
Rural Delivery posties	Tauwhare Transmitter	Eureka Express
Cambridge New World	Pro Drive Whitiara	Simpli Foods
Amcal Cambridge	Supercheap Auto Cambridge	The Beauty House
Prolife Foods	Cadburys	Whittakers
Waikato Valley Chocolates	World of Tyres	Winger Hamilton
Olde Creamery Café	Red Cherry Café	Zest Kidz
The Warehouse – Hillcrest	The Cambers Family	Bunnings – Cambridge
Showcase – Cambridge	Boston Café – Hillcrest	The Warehouse – Cambridge
New World Heaphy Terrace	Countdown – Cambridge	Empire Rose – Cambridge
RDI – Cambridge	Cambridge Country Store	New World – Hillcrest
Terrace Repeo – Hamilton East	\$3 & \$5 Store, Hamilton East	Bottle Mart – Hamilton East
Liquorland – Hamilton East	Adeva – Cambridge	SShoppe, Cambridge
Finlayson Pharmacy – Heaphy Terrace.	Expressions – Cambridge	The Pitcher Family
The Cambridge Fine Wine Company	Playways – Hamilton East	4 Squares – Silverdale
Simple Devine – Cambridge	Dante's fine Foods – Cambridge	The Bell Family
The Johnson Family	The Elliot Family	BNZ – Hamilton
The Eccleston Family	Labelmakers Ltd	The Boyd Family
The Mantell Family		

And last, but not least, the dedicated committee members (Ros, Sarah, Kath, Lynsey and Sheryl) who made it all happen, and all the families and teachers of the preschool who chipped in to help. A special thank you to Ros Chambers who has helped organize all the Winter Fairs so far. Unfortunately for us her youngest son graduates to school before the next fair. We will miss you input, Ros!

AVON Calling!

Shop early for Father's Day or start your Xmas Shopping - gifts ideas for all the family from Fragrances, Jewellery, Makeup, Kids toys, and Fashion.
Contact me to see the latest brochure. Ros Chambers 824 1611



TAUWHARE INDOOR BOWLING CLUB

Welcome to the Bowls news, some of which is 'catch-up' on the International, National and domestic scenes.

First the bi-annual match, NZ vs Australia which was held in May at Balcutha over 3 days. On two consecutive Sunday afternoons in June Cue TV screened 2 matches (Ladies Singles and Ladies Triples). The games were played to International rules, which gave us mere mortals, plenty to ponder. The umpires were International and followed what seemed to be a set of rules specially created for these Aussie/NZ encounters – e.g. a killed end is re-played and the penalty acquired is added to the score after the final end. And, I kid you not, the singles were played over 25 ends. Australian mats are 30ft long and NZ mats are around the 22 foot mark. For this match, the length was ½ the difference i.e. around 26 ft. Most of the Aussie players stood to deliver their bowls, and the mats were a lot thicker (hence a lot slower) than our normal NZ ones. As a "warm-up" before the game commenced each player was allowed to bowl 2 bowls to test the mat. The match ended in a 33 draw, and as Aussie already held the trophy, they took it home again.

Once again Cue TV gave us an insight into the NZ National Indoor Bowls Championships. I observe, as others I have spoken to confirmed, there was a "block-out" in the local press. No progress reports, no results – nothing!! TV screened the Singles and Pairs semis and finals. Trevor Coleman (Waikato) was runner-up in the Singles. Lorraine Phipps (Webby) was in the Pairs semis. Lorraine was a member of the Tauwhare Club in 2001.

The Eastern Waikato Junior Singles Championship was held recently and all of Tauwhare's Juniors entered. Amber McNally won, with Bronwyn McNally coming Runner-up. Congratulations to you both. B. Meads, I Billings and Andrew McNally were selected to play in Waikato's B team for the Munn Shield.

Eastern Waikato's first Grupen Cup match vs Morrinsville resulted in a win for Eastern. B Meads, H and R Bargh played for Eastern.

Matangi retained the Brown Bowl after Tauwhare's challenge on 14.7.2011. The Brown Bowl competition is contested by the 7 clubs in the Eastern Waikato sub-Centre. Each club gets one challenge per season.

RESULTS

23.6.11 Open Singles

Winner: R. Coxon

Runner-up: B Meads

Ferris Trophy (for the most successful lady in the Open Singles Championship) B Meads



30.6.11 Club Night

Winner: L Grieveson, K Williams

Runner-up Andrew McNally E. Porter Amber McNally

7.7.11 Men's Singles Championship

Winner: A. McNally

Runner-up: J Barge

14.7.11 club Night

Winner: I Spencer D Appleton W Silvester

Runner-up I Pizzin D Miller E Silvester

UP AND COMING EVENTS

4.8.11	Drawn Pairs
11.8.11	Club Night
12.8.11	Couples Night
18.8.11	President/Vice President's Night.
26.8.11	Club Night Tamahere visit (plate please)
1.9.11	Sattrup Trophy



OUT AND ABOUT

12.7.11 – Runners –up at the Gordonton Tournament: J Hooper R Coxon L Verner K Williams

Weekend of the 21st May saw 16 Tauwhare Bowls Club members travel to Mangorei Hall in the Taranaki for the annual challenge against Mangamahoe Club. We were treated to a fun night of bowls, an amazing pot luck dinner and wonderful hospitality. Unfortunately, we lost the bowls! Next year Maungamahoe Club will visit Tauwhare. John Cottle – President.

Visitors and new players are always welcome, Tauwhare Hall Thursday evenings at 7.360pm.
Good Bowling Everyone! Robin Bargh Phone 824 1819



EUREKA BADMINTON CLUB



JUNIOR CLUB NEWS

We have had a busy month with two Yankee tournaments! The first tournament was won by Jess Aldred and Edward Morris. The second tournament was won by Brayden Silvester with runner up Jacob Osment. The girls winner was Katrina Vink and runner up Jess Aldred. These competitions are always fiercely contested and a great way for the children to practise their maths skills adding up the scores to make sure we get it right!!

Congratulations and best wishes to Finn and Bryce on the birth of their son, Samuel Silvester born 22.6.11. Samuel timed his arrival just perfectly to fit around Wednesday nights badminton and we all look forward to meeting him soon

We continue to have great nights of badminton and have welcomed several new members. Family nights are held these school holidays and badminton will continue until the end of term 3. See you there!

For more information contact Trisha Bengé 829 5531



IN YOUR GARDEN

Depending on where you live and what the weather brings, August may seem like the heart of winter or mid-spring, sometimes both in one day. Unpredictability is the operative word, so gardeners must be prepared for battle with good weather protection for susceptible young seedlings.

Timing to plant potatoes? Well it's far too early, but you can get started by sprouting your seed spuds. Choose early varieties such as Rocket, Swift, Cliffs Kidney or Jersey Benz and lay them out in a tray until they have strong shoots from the eyes. Have your ground well prepared and fertilize with a balance of nitrogen and phosphorus to promote a high yield.

Winter is the traditional time to plant deciduous fruit trees, but while you're at the garden center you will see that there's also an excellent range of evergreen citrus trees in store now. Citrus trees can be expensive, they generally start at \$25 but they definitely earn their keep over time. Citrus trees are subtropical, though once established they cope with light frosts. They can be grown in large pots that you can lug under shelter during winter, but of course they need a lot of watering in the summer. In our area Kumquats, Limes, Meyer Lemon, Grapefruit, Oranges and Mandarins all grow well.



Sow or plant spring onions. Punnets of spring onions are great value as you can get dozens of tiny seedlings in each container, plus you can get a good month's head start on home grown seeds. Sow now and your crop will mature in six months, although the good thing about spring onions is that you can eat them whenever you want if you don't mind the fact that they'll be skinnier. And if you've never grown spring onions before, you can buy seed tape that's ideal for beginners.

Hellebores are the darlings of the winter perennial garden, with blooms that nod above clumps of glossy foliage. Also known as winter roses, the most common are hybrids which are available in shades of pure white, pale lemon, apricot, pink, purple and deep claret. If you prefer green flowers, hunt out the Corsican hellebore. All hellebores are frost hardy. Plant in free draining soil in semi-shade or under deciduous trees.

Finish cutting back shrubs, prune the last of your roses, fertilize and mulch.

Happy gardening, Jennifer



LADIES A PLATE

Here are two tired and true loafs from a good friend they are very easily put together, moist and flavorsome very popular in my house.

Weetbix Loaf

6 Crushed Weetbix
500 g of mixed fruit

1 ½ cups sugar

Soak these three ingredients in 600ml of milk overnight

Add 3 cups self-raising flour

Cook in 2 loaf tins for approx 45mins in a moderate oven



Banana Loaf

5 bananas mashed
4 cups flour —4 tsp baking powder sifted
1tsp salt
½ cup butter melted
2 cups sugar
4 eggs beaten
1 cup chopped nuts (optional)
Mix altogether and cook in 2 loaf tins



Oven 200 degrees
Approx 40 mins

Sharon Laurent

OLD FASHIONED REMEDIES



Let's take a trip down 'memory lane'. Our grandparents used a lot of 'old fashioned remedies' which were in kitchen cupboards for common complaints...it was SELF HELP. Here are some of the most common ones which I also remember using and I feel are still very useful in 'our modern world'.

IODINE

I remember my grandmother painting the soles of her feet before bed at night with iodine, it will disappear over night until you get to a stage where it does not disappear- this shows your body does not need it any more.

Middle age people know iodine as the brown stuff that mum used to dab on scrapes and scratches. Liquid iodine worked well in the old days as a great germicide and was also used until about a hundred years ago as a water purifier.

New Zealanders need to get a little extra iodine to prevent goitre problems, as our fruit, cereals and vegetables are low in the iodine needed for good thyroid functioning. Most breads and cereals sold in New Zealand have the additive of iodine, however if an individual is on a vegetable and protein based diet they may need to add iodised table salt to their meals to meet their daily requirements. This is one of the old fashioned remedies that is still valid today as in the past, it is still being used in operating theatres and is often found in first aid kits.

MILK OF MAGNESIA

I remember using this: it was fantastic and very gentle and soothing for acid stomach, indigestion, constipation, heartburn. The original formula was concocted in 1880 and sold under the name, Phillips' milk of magnesia. Milky white in colour, it was an alkaline liquid containing the mineral magnesium, which worked to counteract excess stomach acid and stimulate what is called 'intestinal motility'.

CASTER OIL

Caster oil was known as a quick fix for constipation- you were given a spoonful of this non-tasting oil and it worked wonders. Today castor oil is used more often as a topical treatment - that is, applied to the skin. The oil is full of ricinoleic acid, which is apparently effective in preventing the growth of many viruses, bacteria, yeasts and moulds. It is also good for skin conditions like ringworm, fungal infections, warts and chronic itching. Castor oil comes from the castor oil plant, seeds have been found in ancient Egyptian tombs and the oil pops up in folk medicine all over the world. In ancient Rome the castor oil plant was known as Palma Christi which translates as 'hand of Christ', this name is still sometimes used today.

GOOD LUCK
CHERYL MCFARLANE.



Eureka Discussion Group

The Eureka Discussion Group invites farmers to the mid calving lunch at the Top Pub in Morrinsville on Tuesday 9th August. Bring some cash and arrive from 11:45 and stay for as long as you want. As calving is in full swing this is likely to be all over in 1.5 hours. It is a chance for everyone to get off farm and compare notes as to how things are going. Nothing too formal.

Restoring those pugged paddocks

Having experienced a very wet June/July farmers are faced with the challenge of dealing with pugged paddocks as they kick off the 2011/12 season.

Action is required to ensure pasture growth and milk production for the remainder of the season is not compromised. Research carried out in Taranaki during the 1980s found that oversowing (broadcasting) and undersowing (drilling) ryegrass seed into damaged pastures was an economic way to repair pugged paddocks.

In this trial pasture "pugged" in late July was grazed hard (4-5cm) again in late August /early Sept with dairy cows prior to repair. Broadcasting or drilling seed at 15kg/ha straight after this hard grazing, followed by a roller or harrow produced 1- 2.5 tDM/ha extra over the next two years compared with doing nothing. First grazing was 23 days after sowing after which the paddock can be then included back in the normal grazing rotation.



For severely pugged paddocks the preferred option is to earmark these paddocks for a summer crop this spring and plan to sow into perennial pasture in the autumn of 2012.

For practical management purposes farmers will be limited to cropping approximately 10 percent of the farm this spring. More area in crop will place too much pressure on the rest of the farm. If the proportion of the farm severely damaged is higher than 10 percent, there are other options outlined below:

Direct drill or oversow ryegrass seed at 15kg/ha after a hard grazing in late August, early September as outlined above in the Taranaki trial

Spring oversow chicory in October with fertiliser at 6 kg/ha, or a roundup spray and drill paddocks with chicory at 6 kg/ha, and plan to renew in 6-18 months

Undersow with Italian ryegrass at a rate of 15 kg/ha in autumn 2012, and plan to renew in following 6-12 months

Rolling and harrowing without reseeding will have no effect on DM production or pasture composition.

A DairyNZ led industry group comprising researchers, seed industry and contractors have agreed on an approach for farmers faced with this situation. This group recommends farmers carry out a paddock by paddock assessment of the damage, rank paddocks 1 to 5 based on the extent of damage, and establish a plan for each paddock considering the options outlined above. This paddock ranking tool can be found on the Dairy NZ website (http://www.dairynz.co.nz/Pasture_Condition_Score_Tool) will help you decide what percentage of the farm is severely damaged.

Undertake an assessment of paddocks now, put a plan in place and act on it to make the best of the rest of the 2011/12 season. For additional advice to restore pastures, contact your local seed company representative or consultant.

Phil Irvine
DairyNZ Consulting Officer
027 4839820



Colostrum the "elixir of life."

Colostrum is the first milk produced by a mother (cow or ewe) during the first few days immediately after the birth of their young. It is yellow and thicker than normal milk. The new-born animals must receive colostrum otherwise they may only have a 50:50 chance of survival.

The Colostrum contains:

1. Antibodies that are absorbed from the new born's digestive tract into its blood, and so protect it from infectious organisms.
2. Nutrients – high levels of fat, protein (seven to eight times higher than the concentration in normal mother's milk), vitamins
3. Laxative for the excretion of the meconium – the first faecal discharge of a newborn animal.



Gradually over the four days following the birth the colostrum becomes the milk we know. The Day 3 colostrum is different from day 1, as by day 3 the new born is digesting the colostrum instead of absorbing it. So the colostrum now contains ingredients which help protect the new gut from invading bacteria and viruses. It will also help the normal gut flora to develop.

The newborn has to drink the colostrum in the first 12 hours to get the "antibody protection".

If you suspect the new born hasn't had colostrum, you should provide it colostrum from another source. Colostrum can even be stored for future use by freezing it and then carefully thawing it for future use.

We have cow colostrum at Newstead which can be used to supply new born lambs (as well as calves).

Lambs - Feeding and vaccination

Lambs vary in size and vigour and drink different amounts of milk. Under natural conditions a lamb will suckle the ewe up to 40 times each 24 hours. Therefore small, frequent feedings are more beneficial than a few large feeds. An indication of 'fullness' occurs when the lamb's flanks are level with its sides. Lambs should never look bloated. If a lamb refuses a feed it must never be forced as this can indicate health problems.

Use the feeding program in the table below as a guide. For lambs that are small and weak, it is better to feed a smaller quantity more often (say every four hours). Feeding more than the recommended amounts can cause scouring.

Table of quantity and frequency of feeding

Age (days)	Body weight (kg)	Volume of milk per feed (mL)	Total volume of milk per day (mL)
0 - 4	2.5	75 - 100	300
	3.5	110 - 150	450 - 600
	5	150 - 200	
4 - 5		150 - 250	500 - 750
6 - 14		250 - 330	750 - 1000
15 plus		500 - 660	1,500 - 2,000



If you are rearing young animals for the first time and you are not sure if the animal is sick or you just need some advice, call us on 0800 Visser (0800 847 737).

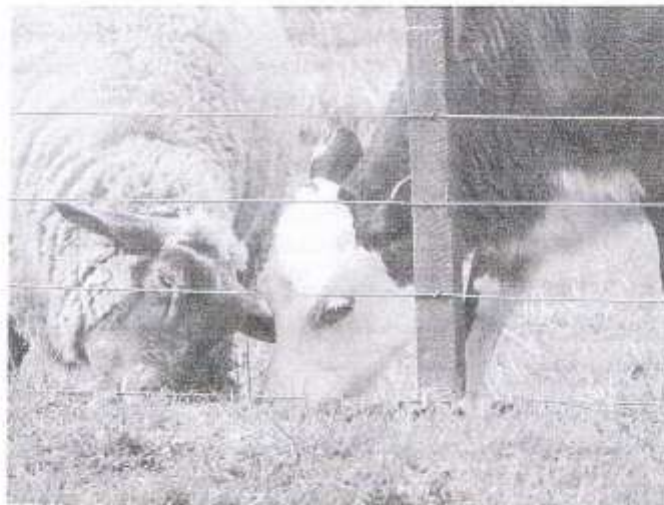
Vaccinating Lambs

Lambs need protection from a variety of diseases which can cause illness and sudden death. If the ewe has been vaccinated with a clostridial vaccine on an annual basis, and the lamb has received a reasonable amount of colostrum, then the lamb will have immunity against these diseases for the first two month's of its life. In this case the lamb will need its first clostridial vaccination at 6 weeks of age and the second dose four weeks after.

If the ewes are not vaccinated, then the lamb will also need a Lamb Vaccine at docking time. This vaccine provides an immediate short term (2-3 weeks) passive protection against *Clostridium tetani* (tetanus) and a sensitising dose for *Clostridium perfringens* type D (pulpy kidney). These lambs will still require their Clostridial vaccine as detailed above.

	Ewe vaccination history unknown	Ewe vaccinated each year with Covexin
1 st vaccination	Docking time tail and castration (1week to 6 weeks) Lamb vaccine	
2 nd vaccination	2-6 weeks of age with "Covexin"	2-6 weeks of age with "Covexin" vaccine
3 rd vaccination	4 to 6 weeks later with "Covexin"	4 to 6 weeks later with "Covexin"
4 th vaccination	Annual vaccination in 12 months time or 6 to 4 weeks before due to lamb.	Annual vaccination in 12 months time or 6 to 4 weeks before due to lamb.

Further information (especially for calf club days) can be found at the following web sites
www.caifclub.co.nz , www.ambreed.co.nz , www.lifestyleblock.co.nz , www.agrisea.co.nz



Introducing Levarna Wolland

belles & brides

Mobile Makeup Artist, Hair & Beauty Therapy Service

We are the Wedding, Special Occasion, and Pamper Party beauty specialists!! We can take care of ALL your beauty requirements from hair and makeup through to manicures, waxing, spray tans - you name it! Ask us to put together a personalised package deal just for you! Planning a hens night, baby shower, birthday or any other special occasion? Why not host an at-home pamper party? We bring the beauty spa to you, while you and the girls have a catch-up and a well-deserved pamper session.



Belles & Brides is the Waikato's most comprehensive mobile beauty service. We offer an amazing range of beauty services including professional hair and makeup and a full range of pampering beauty therapy services.

Weddings, At-Home Pamper Parties, and School Balls/Special Occasions, are our specialities!

Finally, a professional, experienced and dedicated mobile beauty team that can cater to almost all your beauty requirements.

- No more driving home in hectic traffic after your long and relaxing massage!
- No more having to organise childcare for the kids when you want to get your waxing done!
- No running from pillar to post on your wedding day!

Thinking of having a night with the girls? Our Pamper Parties are a perfect way to spend time with friends all whilst getting pampered! Perfect for hens nights, birthdays, baby showers, or just a get-together with friends over a few nibbles and drinks!

Jump onto our website to see our full range of services, or call or email us to book!

www.bellesandbrides.co.nz

Become a fan on Facebook for all our upcoming special offers!

Ph (07) 8241852 or 0226717588

THE BEAUTY HOUSE

Personalised, friendly service

dermatech

Classic Beauty

Do you need some pampering? All facial treatments are \$40!

Book now for a Glycolic Facial and pay only \$25 for your first treatment – your skin will look and feel lighter, brighter, younger & fresher – this is a very popular treatment and you won't be disappointed!

Bella Vi
PURE MINERAL COSMETICS

NZ made gorgeous 100% natural mineral cosmetics at an affordable price. Book for a no obligation free trial. Spend \$100 or more on Skincare or Cosmetics during July and receive a voucher for \$10 off your next beauty treatment. Time to enhance your natural features??? Eye lash/brow tinting and brow shaping only \$30!!!

Gift vouchers & Gifts for purchase (Only Polishes, Cuccio Body Products, Skin Deep)
Good honest value for money with exceptional service and help with any issues from skincare to hair removal. (Eft-Pos available)

Tauwhare Village, 10926 Tauwhare Road

Ph: Jacqueline 8240950 or 0274 853985 Email: thebeautyhouse@xtra.co.nz



The Beauty House



**** NOW IN EUREKA ****

Plus MORRINSVILLE & HAMILTON

2011 CLASS TIMETABLE

MON	7.30 - 8.30pm	EUREKA - Eureka Hall, SH26,
TUES	7.30-8.30pm	HAMILTON - St Peters Hall, 51 Victoria St, CBD
WED	6.00-7.00pm	MORRINSVILLE - Senior Citizen Hall, Canada St
WED	7.30 - 8.30pm	EUREKA - Eureka Hall, SH26,
FRI	6.00 - 7.00pm	MORRINSVILLE - Methodist Church, Thames St

PRICES

Casual Class	\$10
Student / Pension	\$6
Concession Cards:-	
(For 10 Classes)	\$70 (3 months)
(For 20 Classes)	\$120 (6 months)
Family Pass	\$20
2 x Adults & 2 x Children (under 14 yrs)	

FIRST TIME TO CLASS ONLY \$4

Join Zumba Instructors - Megan Hyland, Sarah Rasmussen, Marcia Davie

Ph: 021 905335 (Megan) 027 3871333 (Sarah) Email: megan.zumba@xtra.co.nz

Absolute Skin Therapy

An Institut' DERMed Spa Partner



Prepare for winter Save \$\$

with a microdermabrasion exfoliation facial. As the weather gets colder more cells dry out and accumulate on the skins surface. If the old cells remain on the surface and build up, they contribute to a flat, dull appearance and blemishes. Cells move from the base of the epidermis up to the top in a 30-day cycle. Microdermabrasion can correct rough skin texture and acne. Exfoliation also helps improve the penetration of serums and other skin care products.
Now Only \$45



Brilliant New Natural Skin Care Products

From The Jojoba Company. Jojoba has long been recognised for its unique qualities. It soothes, nourishes and moisturises skin like no other substance on earth. Jojoba is an excellent anti-aging treatment. Exceptionally well priced from as little as \$24.90.

Save More Than \$160!

Call us now and ask about joining our

Queen of Referrals Club

For every friend you refer, YOU get to enjoy huge discounts on selected treatments!

Experienced, Professional, Helpful Advice

My philosophy is to help educate you about the best possible skin care solutions so YOU can achieve your desired results - Netty

284 Tahuroa Road Tauwhare Tele 8240 762 www.absoluteskintherapy.co.nz

Eureka Precast Concrete

117 Hooper Road

Manufacturer of the following
Farm and Small Block Concrete Products

Palm Kernel Feeding Troughs

Feeding Pad Troughs

1,000 Litre Oblong Water Troughs

200 Litre Round Water Troughs

Offal Hole Lids

Septic Tank Replacement Lids

Plus Much More

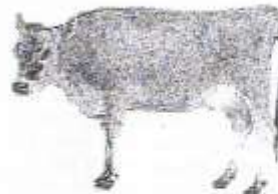
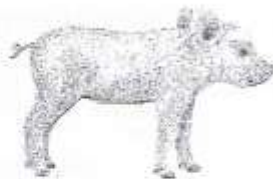
Ph. Ian Manning – 0274 961902 824 1988 a.h.

JBVisserVets

The team of **JBVisserVets** pride themselves on providing you top quality care for all large animals. Be it dairy, beef or lifestyle, your animals are in the best of care. Customer focused to the highest of quality, **JBVisserVets** look forward to meeting you today.

0800 VISSER

47 Lorne St Morrinsville / 161 Morrinsville Road Newstead



**JBVISSER
VETS**
07 889 0414

INNOVATIVE



870 SH 26 Newstead
 Brent 0272 432 011
 mcfarlanes@farmside.co.nz

Ph 824 1186
 Brent 0272 432 011

- Hay / Haylage—round, square, conventional
- Grass & Maize Silage
- Full ground cultivation
- Maize and Crop Planting
- Land lease & Share Cropping
- Spraying
- Truck & Trailer Hire
- Digger
- Metal injected sub-soil irrigation



"Helping farmers feed their cows"



Ctas NZ Ltd

www.ctas.co.nz



Specialists in:

- Professional systems online and PC development
- Online internet based and PC/Lan Systems development
- Business Websites – FREE development (conditions apply)
Check out <http://ctas.co.nz/Webs/Home.aspx> to see more.
- Alert-Me - Online TXT and Email reminder system. Ideal for everything, from birthdays, appointments, sporting, gardening, TAX, WOF, Registration and many more. One off or recurring. Free for home use. Go to www.Alert-Me.co.nz
- YouTXT – Operate your own TXT shortcode using our TXT system for free. Go to www.youtxt.co.nz
- FlightCheck – Check your Flight details, real time from your Mobile Phone. TXT Flight number to 8908. Txt's cost 50c

Phone: 07 824 1025
 Email: grant@ctas.co.nz






CCC CompTIA
Networks Certified



Newstead Veterinary Services
 161 Morrinsville Rd (SH26)
 Phone (07) 856-4522 Fax (07) 8569487
 email: admin@newsteadvets.co.nz
www.newsteadvets.co.nz

We offer a comprehensive range of services for dogs, cats and small pets.

- Puppy pre-school classes
- Comprehensive range of pet care products and pet food
- Nutritional advice with onsite pet dietician and free weight clinic
- Cremation with a local pet crematorium, with optional return of ashes
- Isolation ward
- NZVA Microchipping Accredited Practice
- MAF Accredited vets for pet export certificates to Australia
- Ample parking

We believe that pets are important members of your family.

SPYVES PANEL SHOP
for all
Panel and paint requirements



**AUTOROBOT CHASSIS
and
ALIGNMENT MACHINE**

Ph Ron or Karen 8241 890
Fax 8241 892
Mob 027 280 0346

ROSS PUMPS

&
Filtration Specialists Ltd



Servicing and installation
On all types of pumps
Full Water Treatment
Service Available

DAREN ROSS

Tel. 8241 726 or 0274 346 571
Fax. 8241 879
Email: rosspumps@xtra.co.nz

COMPUTERISED BULK SPREADERS LTD

For all your spreading needs



FERTILIZER, LIME, UREA

Top Service,
Competitive Rates

Roger Springett
103 Hooper Road Eureka
Ph. 8241 175
Mob. 0274 970 413

EUREKA POULTRY FARM

13 Hooper Road
Ph 824 1762

NIC & MARIA STOLWYK

Hobby Hens



Young pullets from
5 weeks to point-of-lay
Great for lifestylers
Bagged up chook manure
Hours Mon-Sat 8-6

Green Acres

Professional lawn and
Garden care service



Maurice Smith

For free no-obligation quote:
Ph: (07) 824 1948
Mobile: 0274 797 282
Fax: (07) 824 1947
Email: msmith@clear.net.nz
Ride-on mowing specialists
Give your lawn the perfect finish

IAN MANNING
REGISTERED DRAINLAYER



For all drainlaying work
New or alterations
Residential & Commercial
Blocked drains cleared
Maintenance
Prompt service

Tel. 8241 988
Fax. 8241 989
Mob. 0274 961 902

Kelvin Lalich Builders Ltd

- New homes
- Alterations
- Large & Small
Commercial Buildings
- Chicken Sheds

Phone 889 3951 (bus)
889 3975 (a/hrs)



**"Building
with Pride"**

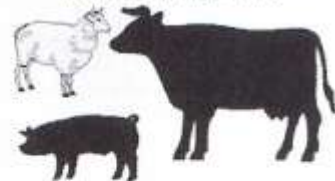
FRESH
APPLES & PEARS
STONEFRUIT IN SEASON



NEWSTEAD ORCHARD
552 Morrinsville Road

OPEN MON-SAT,
W J McMiken & Co
Morrinsville Road
Tel. 856 4478

TAUWHARE HOME KILLS LTD



Tauwhare Village
Owner Operators
Trevor & Leonie Brunton

On Farm Killing Service
All beef hung for 7 days
FREE OFFAL DISPOSAL

Ph 824 0880 all hours
Fax 824 0809
Mob 0274 757 315



Gayle Orr

Spiritual Counsellor & Teacher
Working with angels to relay
Messages from loved ones

Personal Readings
Healing

Spiritual Counselling
Meditation & Relaxation Classes

For a personal reading
phone: 07 824 1713



Also

- ✓ Upholstery Cleaning and Protection
- ✓ Flood Restoration
- ✓ Stain Treatment
- ✓ Auto and Marine Work
- ✓ Window Cleaning
- ✓ Senior Citizens Rates

Phone Grant on 0275 542 116
Or 07 823 7031
Locally Owned and Operated

Trusler Contract Lawn Mowing

Fast, efficient, reliable



Free, no-obligation quote and advice
Lex Trusler
Ph: 824 1906 Mob: 027 221 0861
Fax: 824 1907
Lifestyle blocks—sections
Road verges—horse studs
20 yrs + experience

Got A Leak?

Save \$\$\$

Fix it yourself with

Feb Aquaseal Hyband the leak repair kit in a roll

- Easy to cut, mould and apply
- Instant watertight seal
- Lasting bond
- Wide range of uses

Available from 50mm to 450mm wide
Stop leaks in roofs, hay barns,
covered yards, milking sheds, cars,
trucks and caravans

Use for patch repairs and for flashings

To find out more.... call Debbie
Ph 07-8241644 or 027-247 9367

CALF COVERS

"Canvas, Jute, or satin lined for Calf Club"

I also manufacture horse covers, trailer covers or any other kind of cover you may want. Good quality, P.V.C. horse gear bags — can also be used for dive bags. Good quality at reasonable prices.

Phone Narelle Pollock
824 0736



Local builder Tauwhare Road resident Registered Tradesman



- Concrete work
- New homes
- Renovations
- Alterations
- Farm buildings
- Decks
- Fences
- Bathrooms
- Kitchens
- Roofing

Over 29 years building experience
No job too big or too small

Craig Griffin Builders Limited
Phone Mobile: 027 279 2682
Phone/Fax After Hours: 824 1607
Email: craigandjackiegriffin@ihug.co.nz

nzgardensheds

the best little Sheds around

Your local garden shed supplier of
NZ made, self assemble Garden Sheds
(Zincalume or Colour Steel)

GET IN TOUCH...

- * EASY ASSEMBLY
- * MADE TO LAST!

Waikato Shed Company

218 Hunter Road, Eureka,
Hamilton

Phone: 07 824 1045

Email: sales@nzgardensheds.co.nz

EQUIRE FOR A BROCHURE NOW

Scanlan & Jones

Specialists in:

- ✓ Wood Fire Sales
- ✓ Wood Fire Installation/Repairs
- ✓ Hearth Manufacturers
- ✓ Outdoor Fire Installations
- ✓ Chimney Sweeping
- ✓ Heat Transfer Kits — Sales & Installation

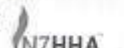
Registered Installers
Over 17 Years Experience
Free Quotes



Contact Justin & Brendon
0274 834 267 (day)

A/Hrs: 07 824 0950 Fax 07 824 0951
Email: scanlan.jones@xtra.co.nz

Member of New Zealand
Heating Association



HAIRFIELDS

HAIR DESIGN

95 HOOPER ROAD

Sharon Laurent

Full salon facility in Eureka
Total hair care professional
with many years experience
Agent for Nutrimetics also



Open Tuesday to Friday
Late nights Tues/Thurs
Tel. 824 1712 or 027 280 5978



EUREKA MOTORS

COLIN DUNCAN (PROP), SH 26, OPPOSITE EUREKA HALL

**WE ARE EQUIPPED AND SKILLED TO CARRY OUT
ANY REPAIRS NEEDED ON ALL TYPES OF VEHICLES**

Our experienced workshop staff guarantee to provide quality service
to all our customers

If we don't have the right part in stock we'll get it for you straight away
If you need some work done, why not give us a try?

OPEN MONDAY - FRIDAY 7.30am - 6.00pm

SATURDAY 8.00am - Noon

Ph 8241 773 Fax 8241 073

WALLING CONTRACTING LTD

'YOUR PROVEN LOCAL ONE STOP CONTRACTORS'

WE CAN OFFER YOU THE FOLLOWING SERVICES:



- *Grass Silage
- *Ploughing
- *Rotary Hoeing
- *Ripping
- *Undersowing
- *Baling & Wrapping
- *Digger (12 Ton)
- *Grass Crop Sales

- *Maize Silage
- *Power Harrowing
- *Discing
- *Maize Planting
- *Roller Drilling
- *Power Harrow/Seedbox
- *Shavings & Sawdust
- *Maize Crop Sales



**FOR ALL YOUR CONTRACTING NEEDS
PHONE LEN OR BECKY
ON**

824 0894 (anytime)

How To Avoid Costly Yet Common Mistakes When Building Your New Shed

Find Out What Other Shed Companies May Not Tell You



Adjusting the bay widths on this shed used by a food distribution business reduced waste space between the trucks and increased valuable storage space.

It's disappointing when you discover that something you paid good money for turns out to be of poorer quality than expected. Perhaps due to inefficient & outdated design it doesn't exactly suit your needs or doesn't "measure up" in some areas. That's why we take time to custom design your ideal shed and only use high quality steel materials with best building practices.

Contact us to receive a copy of our **FREE** booklet packed full of information and advice that will save you time, money & stress. It will help you to compare building systems and materials to help you choose which is most suitable for you. We'll make sure you avoid costly mistakes and get a great shed, done right!

FULL DESIGN & BUILD OR KIT SET ONLY OPTIONS

Once we have custom designed the shed that best meets your needs, you can choose to build it yourself, or have our experienced builders complete it for you. The majority of kit components come cut to length with bolt holes pre-punched for accuracy. We are also happy to stand the frame only, leaving you to handle the cladding, roofing, door fitment etc. You have the flexibility to do as much (or as little) of the work as you are comfortable with.



Recently constructed 14 x 16 x 4.2m American Barn with ply & batten cladding on end wall and internal dividing wall. Built near Matamata, this shed utilises a partial clear span design to provide an unobstructed work shop area.

Our multi-purpose shed was a challenging build and Waikato Sheds did a first class job of it. Their attention to detail and quality of workmanship was really good. Nothing was too much trouble.

Rob Waddell, Olympic Gold Medalist,
Americas Cup Sailor



FARM • INDUSTRIAL • LIFESTYLE



Freephone **0800 555 147**
218 Hunter Road, Eureka
www.waikatosheds.co.nz

WAIKATO SHED
COMPANY ✓
great sheds, done right!
Hamilton • Taupo

STEEL FRAME BUILDINGS

Custom design and build

Morrinsville Veterinary Clinic was looking for a competent and reliable building company to design, engineer and build their new clinic. Waikato Shed Company came highly recommended.

So you thought we just did sheds?

Through our strategic partnerships with architects, engineers and builders such as Kelvin Lalich, Waikato Sheds is well equipped to undertake significant industrial building projects.

The new Morrinsville Veterinary Clinic was by no means an easy project. With a high degree of precision required, there was no room for error in getting the steel portals to fit within the erected tilt slab walls.

By working closely with our strategic partners and each playing to our respective strengths, we tackled this challenging project and delivered on time and within budget.

The result is a great purpose built facility of the highest quality design and construction that didn't cost the earth.



Morrinsville Vet Clinic during construction revealing extensive steel framing

To find out how affordable your next industrial building could be, call Brian or Aaron on **0800 555 147**

www.waikatosheds.co.nz | SH26, Eureka

WAIKATO SHED
COMPANY ✓

great sheds, done right!

Hamilton • Taupo



bothorizon